

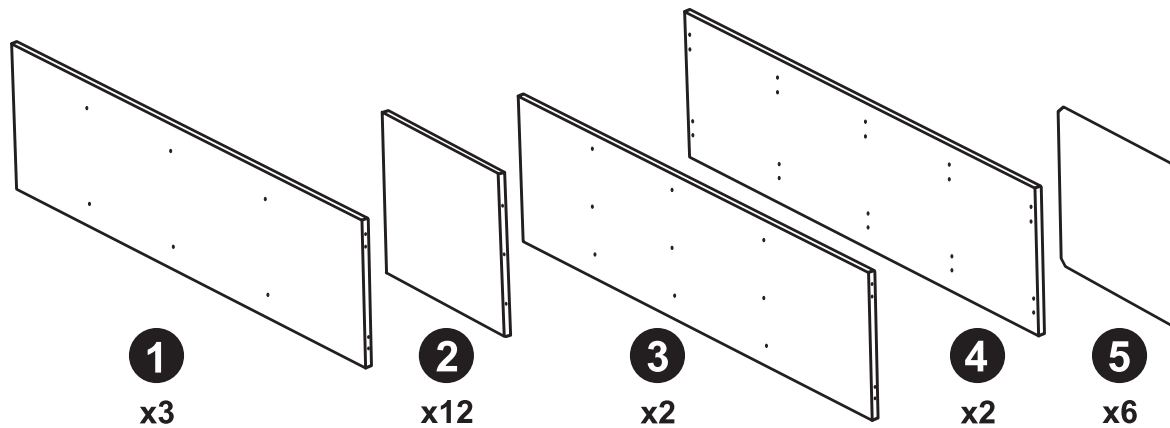
4 x 4 Cube Compact (12mm)

ASSEMBLY INSTRUCTIONS

Assembled Size: 1210mm High x 1210mm Wide x 295mm Deep. Internal Cube Size: 285mm High x 285mm Wide x 295mm Deep

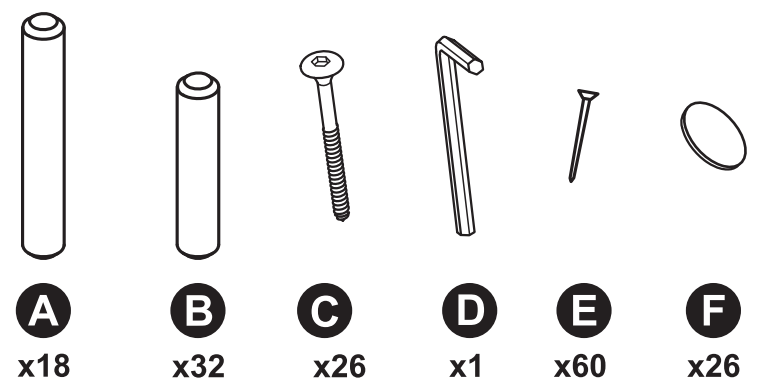
The only tools you require are an Allen key (supplied in Hardware Kit) and a small hammer

LIST OF PARTS



Note: All panels here are showing the internal view hole configurations.

Hardware Kit

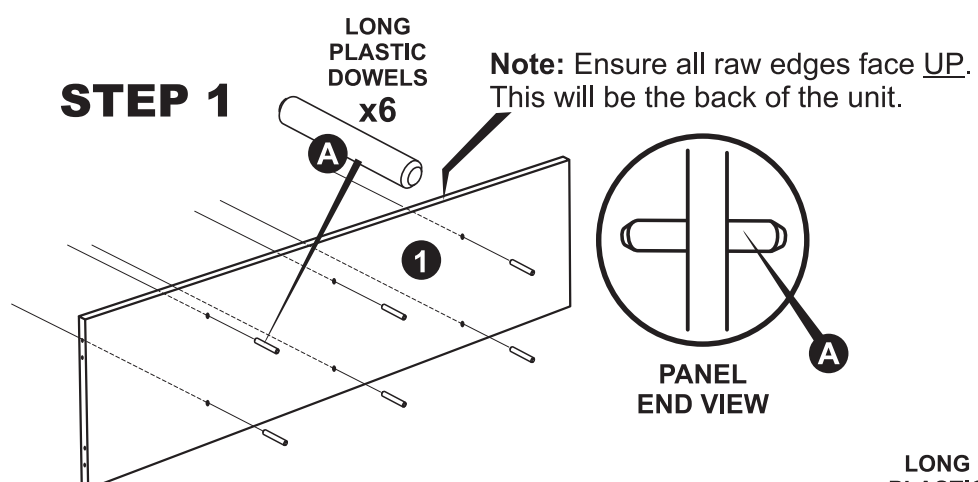


Hints: Assemble on a flat, clean, protected surface.
Fit panels together by tapping with hand to seat in place.

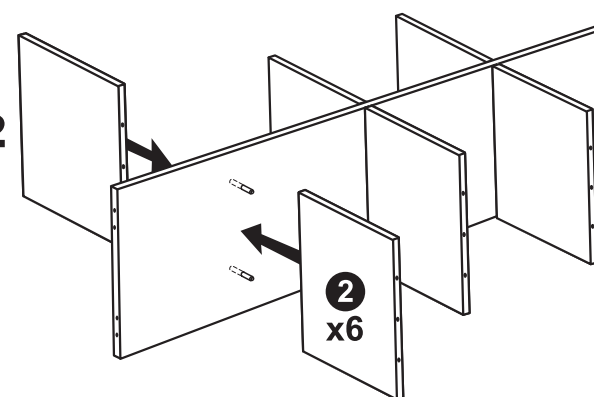
WARNING

• CHOKING HAZARD - This product contains small parts.

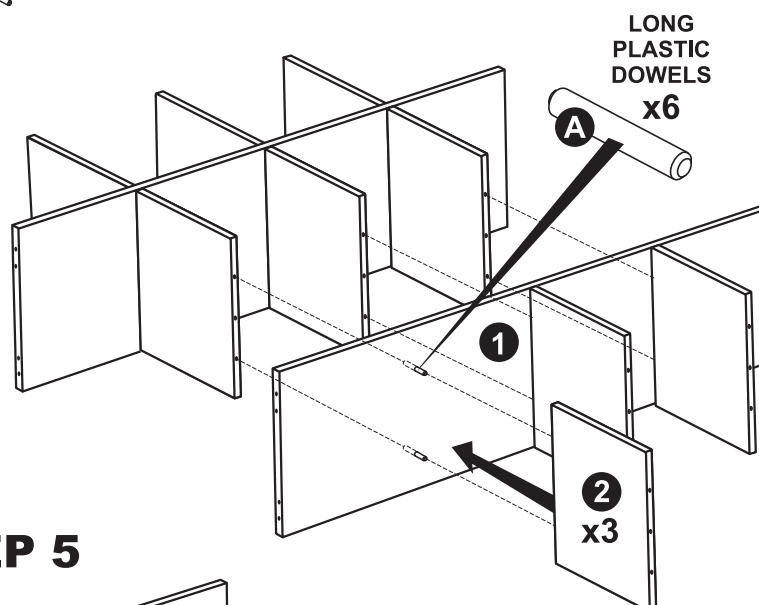
STEP 1



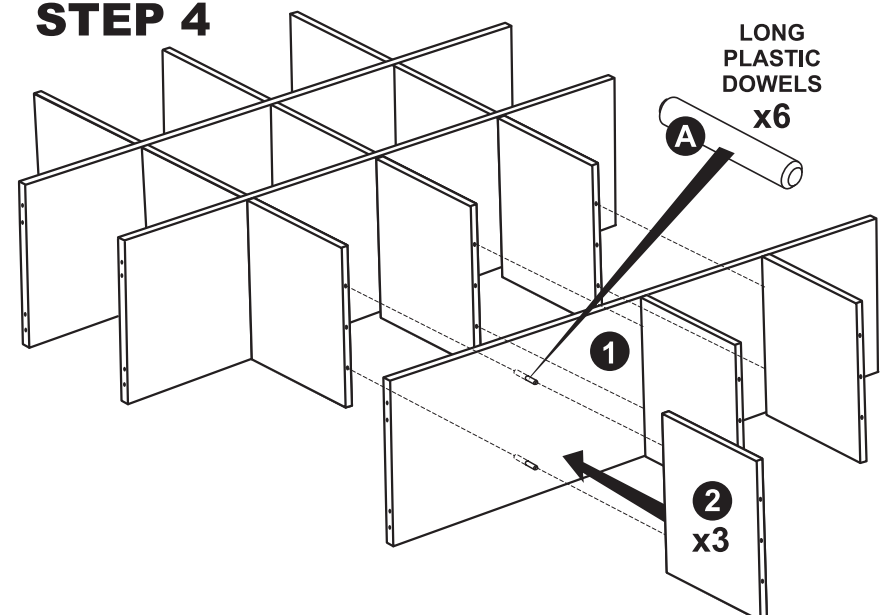
STEP 2



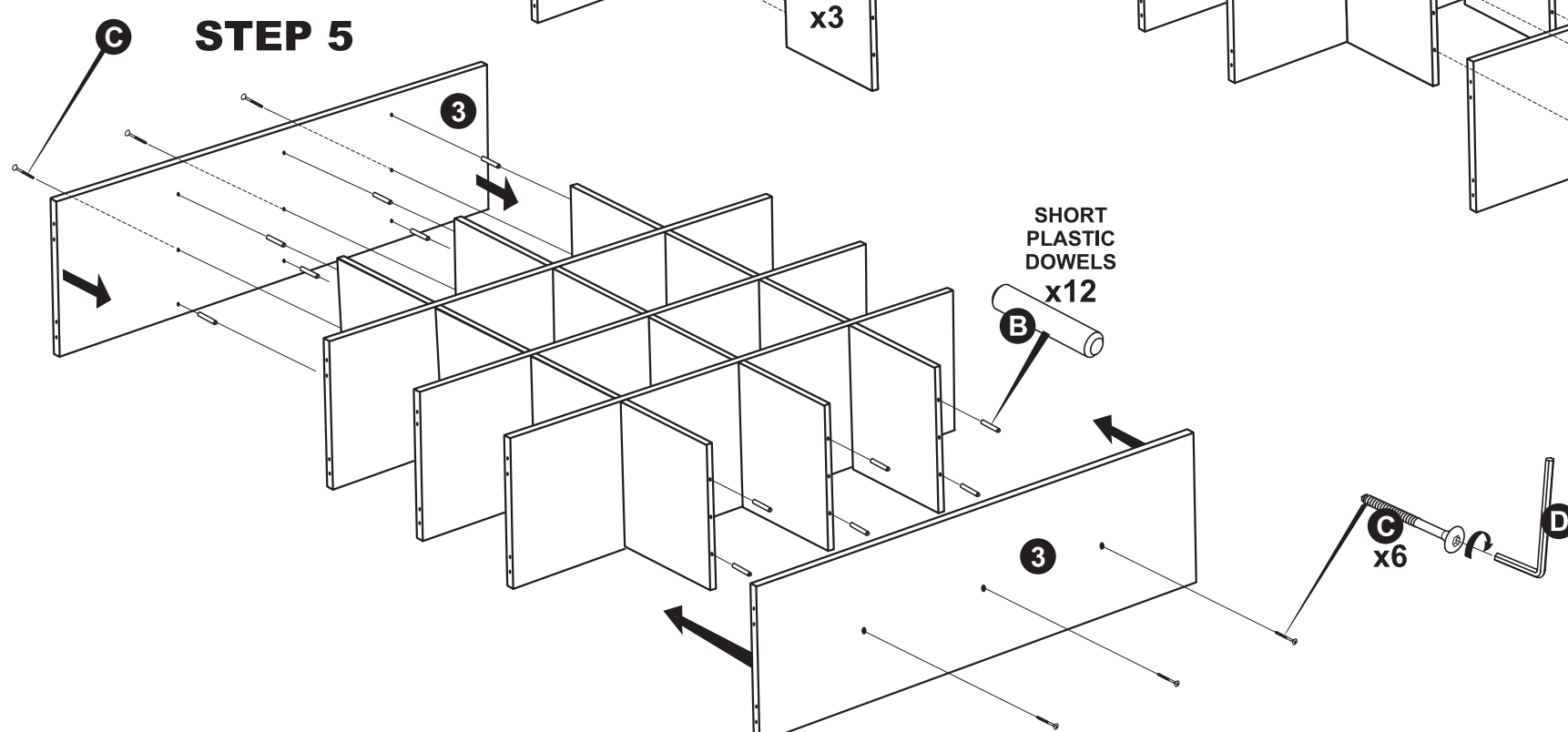
STEP 3



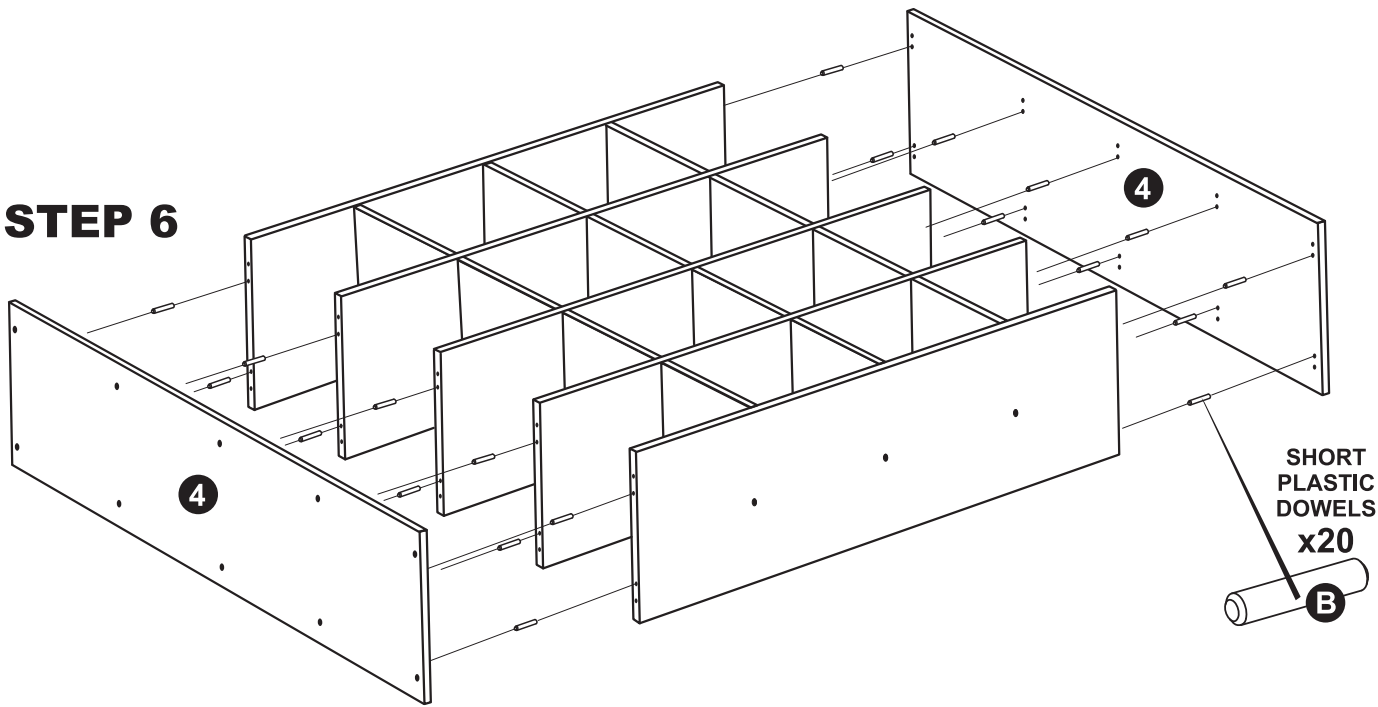
STEP 4



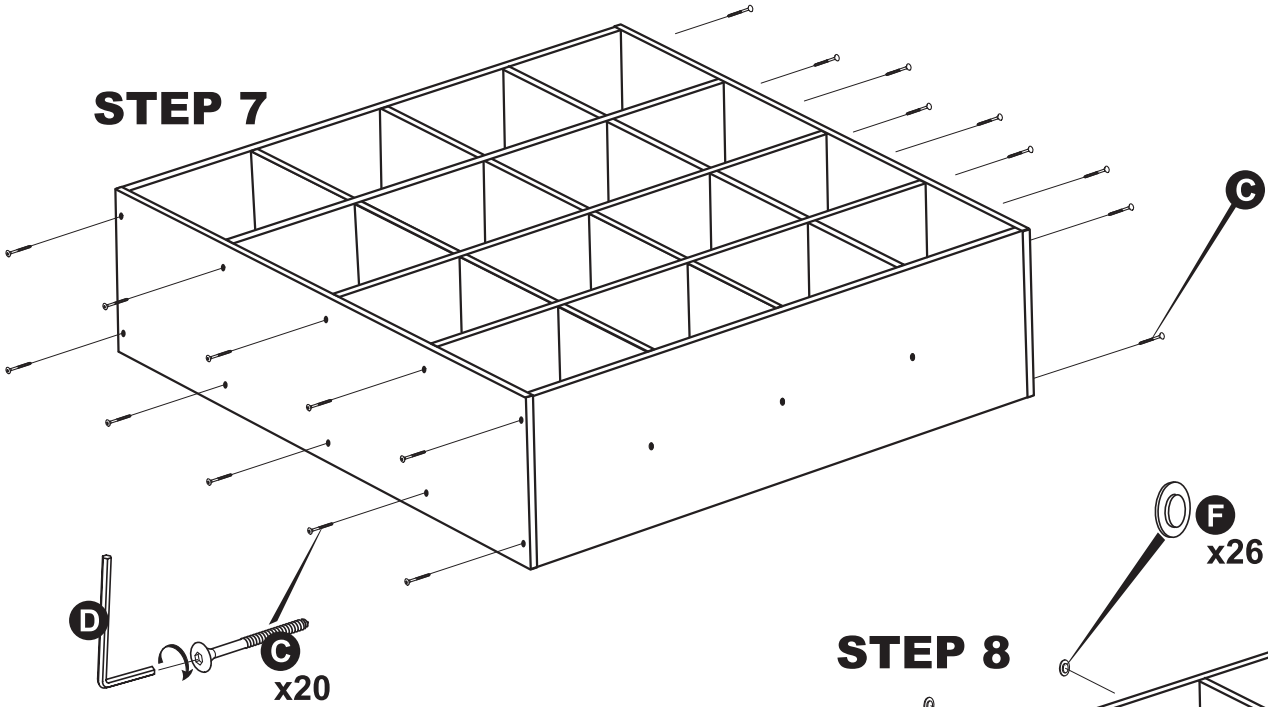
STEP 5



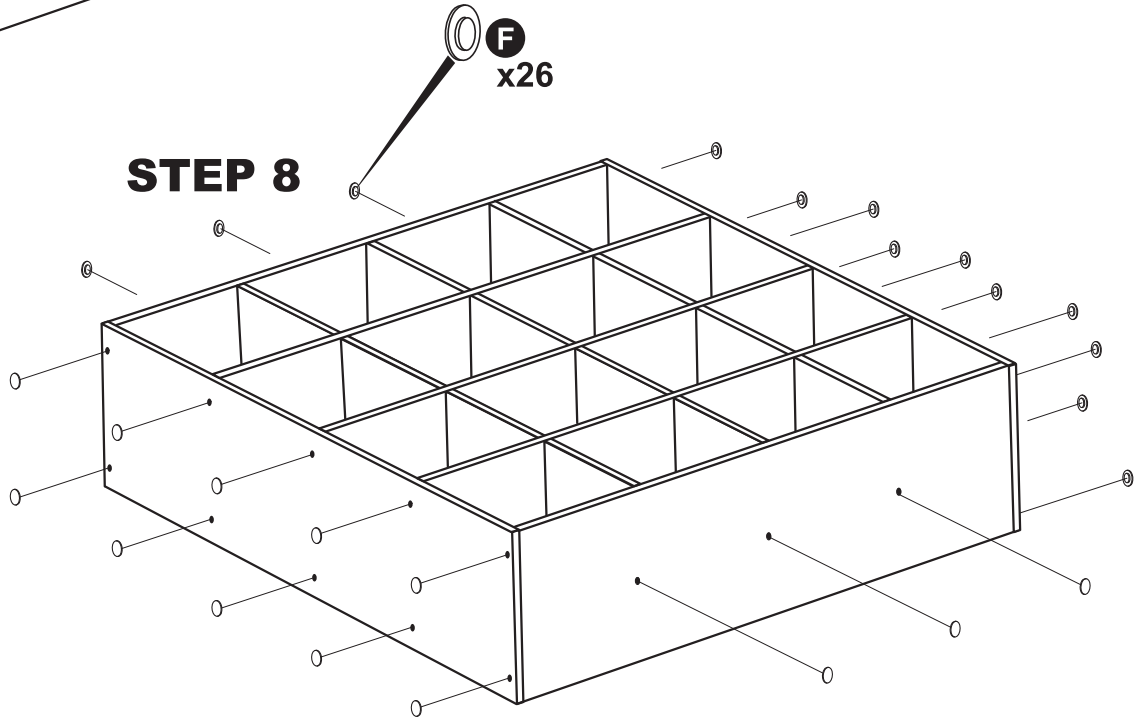
STEP 6



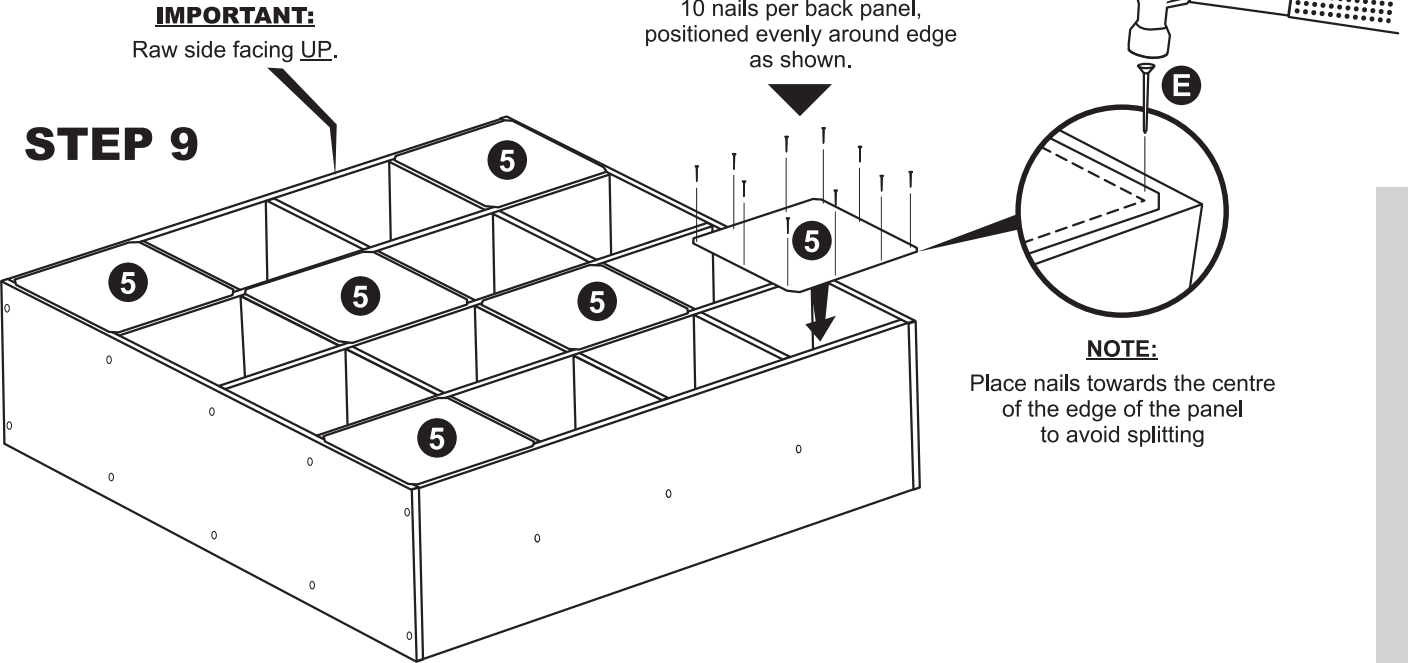
STEP 7



STEP 8



STEP 9



SUGGESTION:
10 nails per back panel,
positioned evenly around edge
as shown.

