

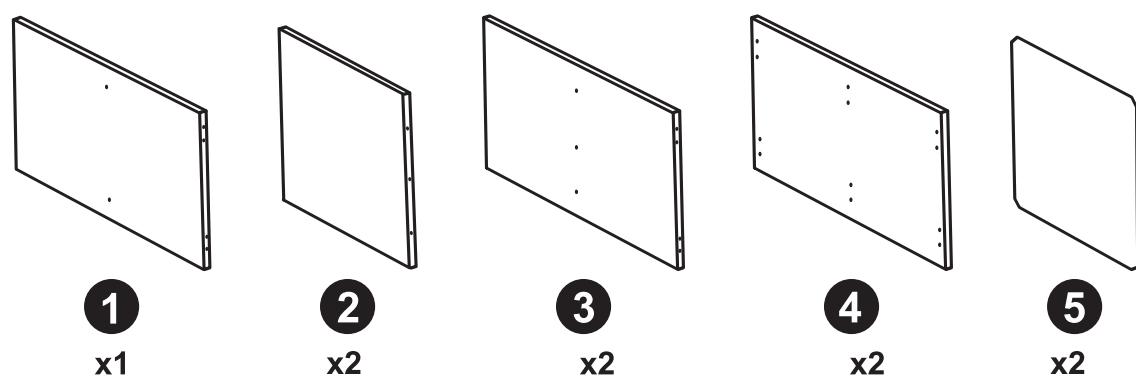
2 x 2 Cube Compact (12mm)

ASSEMBLY INSTRUCTIONS

Assembled Size: 610mm High x 610mm Wide x 295mm Deep. Internal Cube Size: 285mm High x 285mm Wide x 295mm Deep

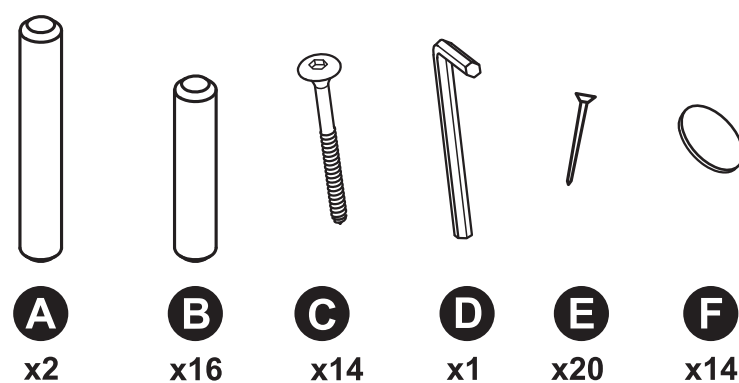
The only tools you require are an Allen key (supplied in Hardware Kit) and a small hammer

LIST OF PARTS



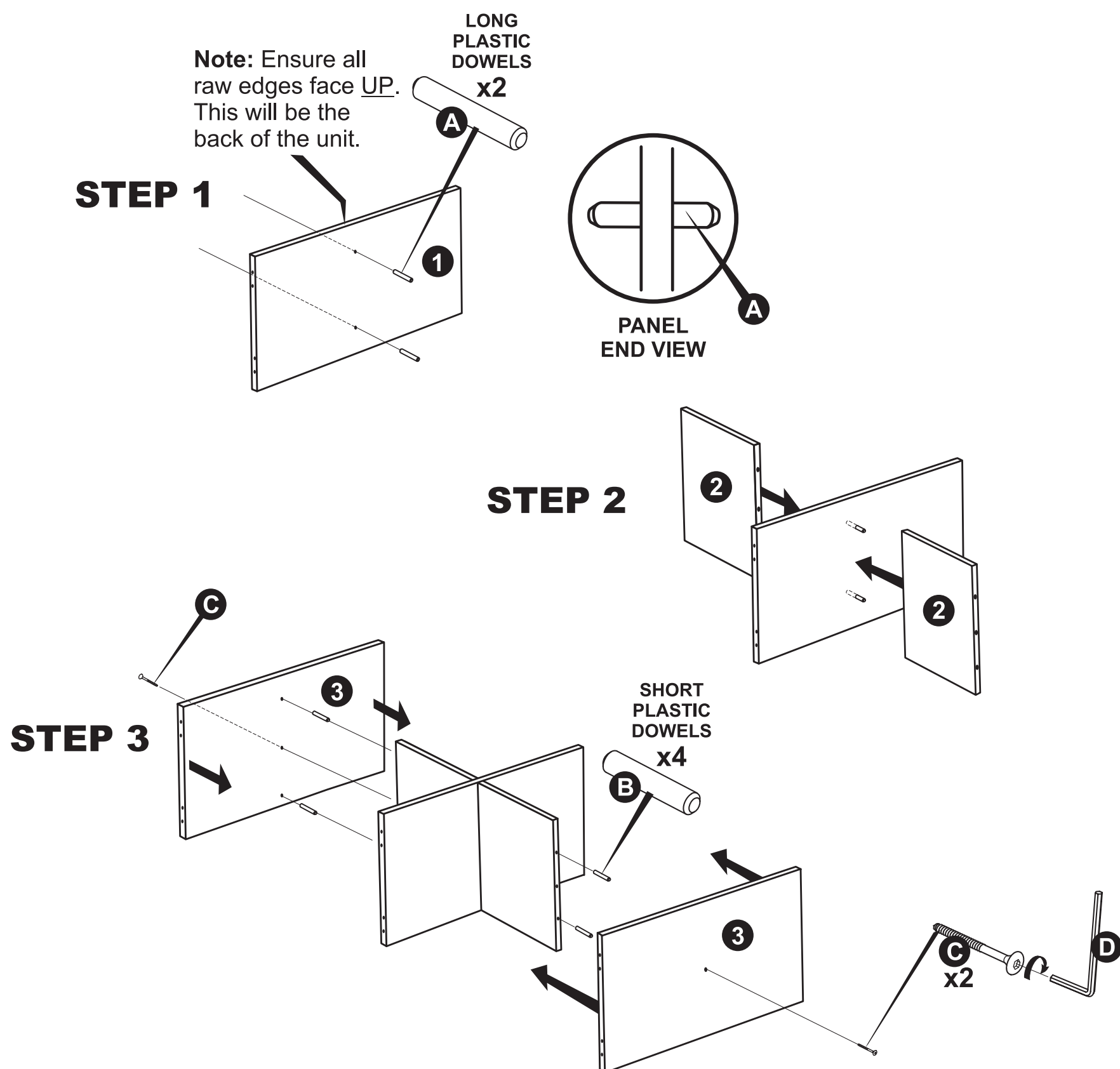
Note: All panels here are showing the internal view hole configurations.

Hardware Kit

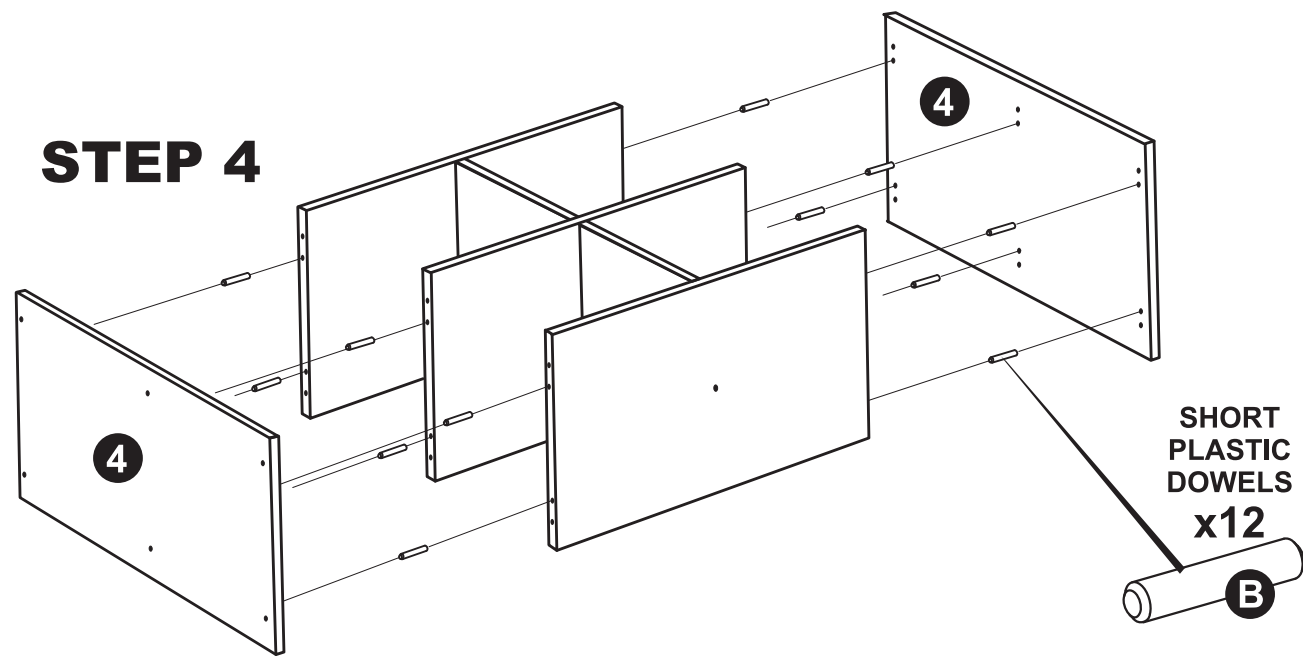


Hints: Assemble on a flat, clean, protected surface.
Fit panels together by tapping with hand to seat in place.

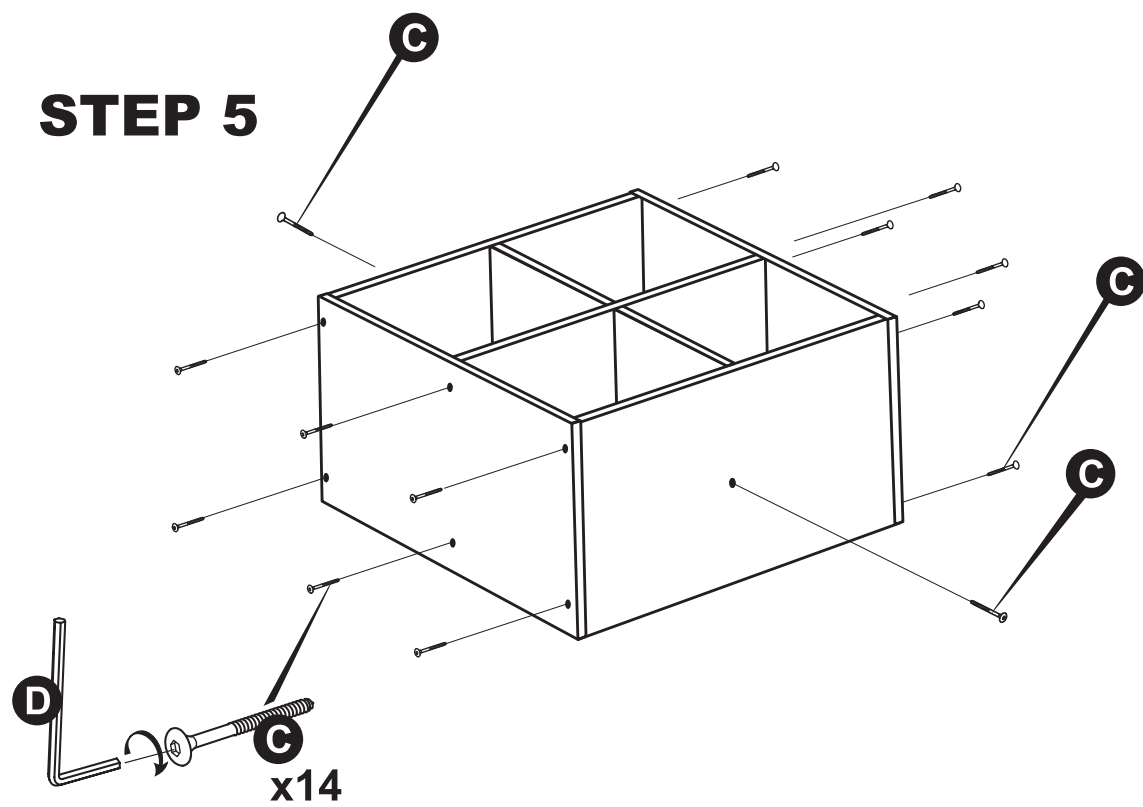
WARNING
• CHOKING HAZARD - This product contains small parts.



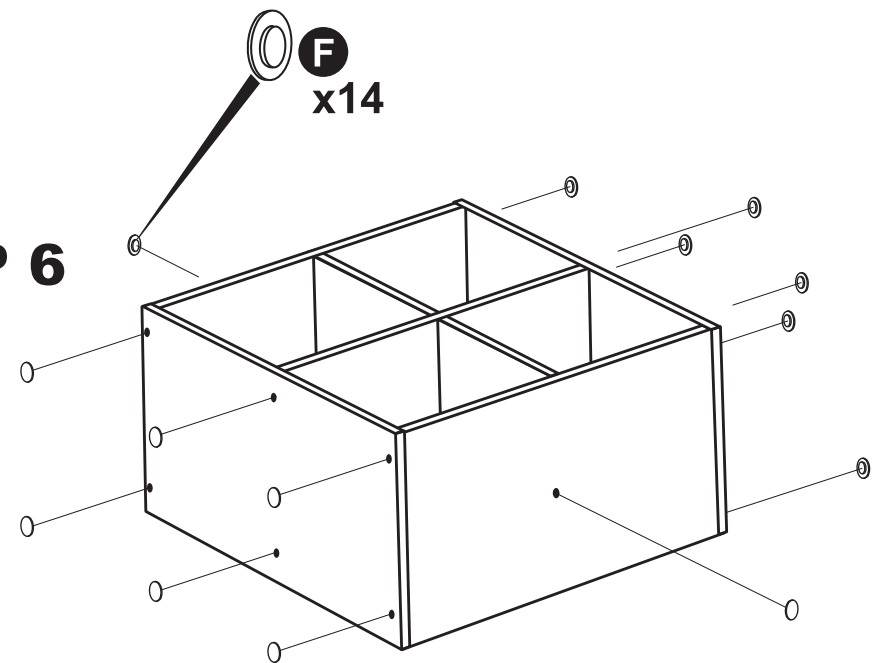
STEP 4



STEP 5



STEP 6



IMPORTANT:
Raw side facing UP.

STEP 7

