



Handy Clip

Adjustable between 5mm - 22mm

Instructions:

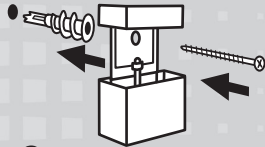


1 Loosen the adjustment screw at the bottom of the Handy Clips to expose the mounting holes. (Note it is not necessary to separate completely).

2

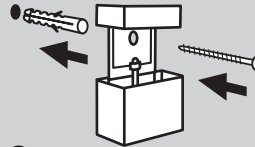
Using a pencil, mark the position of one of the Handy Clip's mounting hole onto the wall.

Mark the position of the second Handy Clip's mounting hole, using a spirit level to ensure the shelf will be level.



3 FOR PLASTERBOARD WALL

See your local hardware stockist for recommended wall plugs suitable for plasterboard wall (not provided) and fasten Handy Clips to wall as per the hardware recommendations.

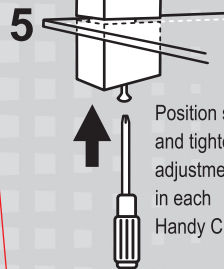


3 FOR MASONRY WALL

Using a 7mm drill bit, drill a 38mm deep hole for each Handy Clip. Insert wall plugs provided and fasten Handy Clips to wall with screws provided.

OR

4 Ensure black plastic protector is seated correctly on the top of the base section of each Handy Clip.



Position shelf and tighten adjustment screw in each Handy Clip.

Notice to Purchaser:
Since fixing methods and conditions are beyond our control, the manufacturer does not accept any liability for any deficiency in performance resulting from the use of its products.

MADE IN CHINA Distributed by SFN Phone 1300 734 714

ITEM CODE: SLMW - WHITE

Barcode
9341136006063

Back of card 6

size: 106mm w x 194mm d